







Jaquar Consumer Lighting

Reflect your story to the world and let your spaces shine at its best with the right lighting solutions from Jaquar Lighting.

Choose from an array of options in varied sizes, shapes, and budgets, and enhance the indoor and outdoor spaces that will uplift the ambience invariably.

Our range of lighting includes:

Smart Lights
Downlights
Spot Lights
Battens
Lamps
Strip Lights
Street Lights

Benefits:

- Energy Savings Upto 90%
- Long Life
- Green Lighting Solutions
- Maintenance Free
- No UV/IR Radiations
- Sleek and Compact Designs
- Uniform Illumination
- Glare-free Lighting
- With Motion Detecting Sensor



Content

Smart Lights	04-13
Downlights	14-23
Spot Lights	24-27
Battens	28-33
Lamps	34-41
Strip Lights	42-45
Street Lights	46-49





Smart Lights

The world of devices is getting smarter and so are our Jaquar Lighting products. Providing smart lighting solutions for our smarter audience! All our Smart Lighting products are designed to save time, effort, and energy. The products minimise human touch to allow better hygiene as well as provide ease of operation.

- Next-gen daily lighting products
- Bluetooth and Wi-Fi-enabled bulbs
- In-built battery bulbs
- Motion-sensing battens
- Automatic downlights & panels

APPLICATIONS



Bedrooms



Parkings



Lobbies



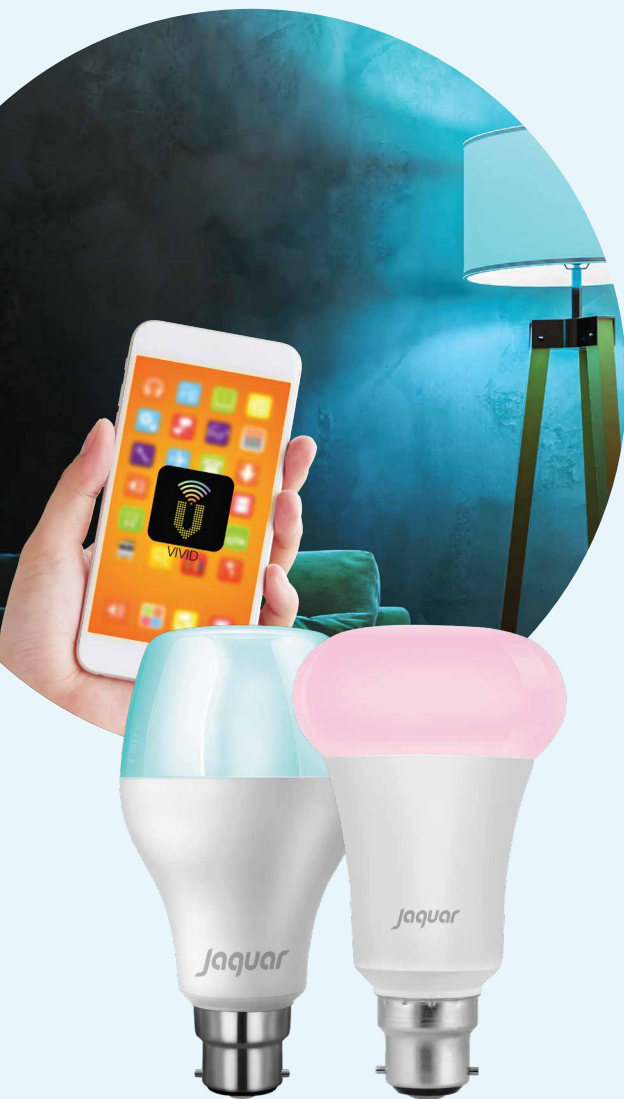
Cabinets













Staircases



Walkways



-  Single app can control 200 bulbs within Wi-Fi/ bluetooth range
-  Compatible with bluetooth version 4.0 and above
-  Can smoothly work up to 10 meter
-  3 million+ color options
-  Brightness adjustable from 100% to 0%
-  Create different groups to work together
-  Wireless Connection through Wi-Fi
-  Wi-Fi products compatible with Amazon Alexa/ Google Home
-  Suitable for decorative purposes
-  High efficiency

Technical & Commercial Data:

Input voltage range: 100 - 300 V AC
 Luminous efficacy: >80 Lm/W @6500K
 Power factor: >0.95
 Housing materials: Thermally conductive polycarbonate
 Lot size: 20 pcs

VIVID



Bluetooth & Wi-fi Enabled
 (Supported Devices: Android & iOS)

Vivid (Bluetooth) & (Wi-Fi)

Product Code	Power (W)	Color	Dimension (LXWXH)	MRP
LV VD07B22RG	7 W	RGB / CW	Φ 65 x 126	1020
LVDWF07B2RGB	7 W	RGB / CW	Φ 70 x 120	1540



With motion detecting sensor



Long life



CRI>80



Beam angle
>120°

Light turns on in presence of motion and will turn off after 2 minutes if there is no motion

Technical & Commercial Data:

Input voltage range: 110 - 300 V AC

Luminous efficacy: >80 Lm/W for 8 W

>90 Lm/W for 15 W & 22 W

Power factor: >0.95

Sensor coverage range: 5-7 meters

Mounting height: Max. up to 5 meter

Housing materials: Thermally conductive polycarbonate

Lots size: 20 pcs

Strella

SMART // SQUARE/ROUND

Motion sensor based downlights

Product Code	Power (W)	CCT	CUTOUT (MM)	Dimension (LXWXH)	MRP
LSTS01S008XC	8 W	CW	105 x 105	116 x 116 x 35	885
LSTS01R008XC	8 W	CW	Φ 105	Φ 116 x 35	885
LSTS01R015XC	15 W	CW	Φ 155	Φ 165 x 35	1230
LSTS01R022XC	22 W	CW	Φ 205	Φ 220 x 35	1480



With motion detecting sensor



Long life



CRI>80



Beam angle
>120°

Turn light on in presence of motion and will turn off after 2 mins if there is no motion

Technical & Commercial Data:

Input voltage range: 100 - 300 V AC

Luminous efficacy: >100 Lm/W

Power factor: >0.95

Sensor coverage range: 5-7 Metres

Mounting height: Max. upto 5 meter

Housing materials: Thermally conductive polycarbonate

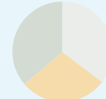
Lot size: 20 pcs

Kubik

SMART III

Motion sensor based battens

Product Code	Power (W)	CCT	Dimension (LXWXH)	MRP
LKBS01S020XC	20 W	CW	1135 x 22 x 37	1080



*3-in-1
color option
CW-NW-VWV



*Remote control
operation



*Dimmable

BENEFITS:

- 80% energy saving
- Compact and sleek design
- 2000 Lm lumen output
- Single batten with tunable colors & dimming

*Single Remote can control 30 battens



Long life



CRI>80



Beam angle
>120°

Technical & Commercial Data:

Input voltage range: 100 - 300 V AC
Luminous efficacy: >100 Lm/W @6500K
Power factor: >0.95
Dimming: 100% - 20%
Housing materials: Thermally conductive polycarbonate
Lot size: 20 pcs

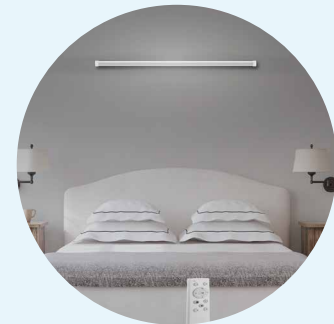
Starlite Alika (Remote)

SMART III

LED BATTEN | HOME SERIES

Remote control operated batten with tunable colors & dimming

Product Code	Power (W)	CCT (K)	Dimension (LXWXH)	MRP
LSRA01S020DM*	20 W	CW / NW / WW	1170 x 20 x 40	1200





Starlite

Product Code	Power (W)	CCT	Dimension (MM)	MRP
LSRE01S020X	20 W	CW / NW / WW	1170 x 20 x 40	615



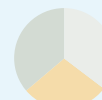
Long life



CRI >80



Beam angle
>120°



*3-in-1
color option
CW-NW-WW

Changing tri-color from CW to NW to WW in manual switching

Technical & Commercial Data:

Input voltage range: 100 V - 300 V AC

Luminous efficacy: >100 Lm/W

Power factor: >0.95

Housing materials: Thermally conductive polycarbonate

Lot size: 20 pcs





 SURGE PROTECTION
UPTO 4KV

SUSTAIN VOLTAGE
UPTO 440V



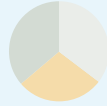
Long life



CRI > 80



Beam angle
> 120°



*3-in-1
color option
CW-NW-WW

Technical & Commercial Data:

Input voltage range: 100 V - 300 V AC

Luminous efficacy: >100 Lm/W @6500K

Power factor: >0.95

Housing material: Thermally conductive polycarbonate

Lot size: 20 pcs

Strella Tri-color

Product Code	Power (W)	CCT	CUTOUT (MM)	Dimension (MM)	MRP
LSTA3IN1R15X	15 W	CW / NW / WW	Φ 155	Φ 162 x 35	920





UV Lamp

Product Code	Power (W)	MRP
LUVL01TL040X	40 W	6500

Introducing

UVL

(Ultra Violet Light)

The light that disinfects.

UV Light with anti-microbial properties that can kill up to 99.9% Bacteria and Viruses in the air as well as on surfaces.

USP:

- Life detection- safely suspends operation on detection of living beings
- Wireless remote control
- Long service life
- Total safety and comfort with intelligent controls
- Suitable for green field applications
- Easy integration with specialised controls
- Impeccable design
- Emanates a distinct, unique smell to indicate that disinfection is in process

Precaution: Take everyone, including pets, outside the room while the disinfection process goes on as UV light is harmful for skin and eyes.

Lot size: 4 pcs







Downlights

Create an enchanting ambience with Jaquar's high-performance LED downlights in different wattages. Not only these downlights uplift the entire mood & the ambience of the place, but they also make a great addition to your entire home décor.

- Recessed Downlights
- Surface Mounted Downlights
- Fixed Downlights
- Trimless Downlights
- Round Downlights
- Square Downlights

APPLICATIONS



Living rooms



Kitchens



Lobbies



Staircases



Corridors



Skylite

Product Code	Power (W)	CCT	Dimension (L X W X H)	MRP
LSKL01S036XC	36 W	CW	595 x 595 x 36	2150



Long life



CRI >80



Beam angle
>120°

Technical & Commercial Data:

Input voltage range: 100 V - 300 V AC

Luminous efficacy: >105 Lm/W

Power factor: >0.95

Housing material: CRCA

Lot size: 5 pcs



Lumax Plus

Product Code	Power (W)	CCT	CUTOUT (MM)	Dimension (MM)	MRP
LLMP01S003XC	3 W	CW	74 x 74	85 x 85 x 20	385
LLMP01S003XN	3 W	NW	74 x 74	85 x 85 x 20	385
LLMP01S003XW	3 W	WW	74 x 74	85 x 85 x 20	385
LLMP01R003XC	3 W	CW	Φ 74	Φ 85 x 20	385
LLMP01R003XN	3 W	NW	Φ 74	Φ 85 x 20	385
LLMP01R003XW	3 W	WW	Φ 74	Φ 85 x 20	385
LLMP01S006XC	6 W	CW	105 x 105	121 x 121 x 20	600
LLMP01S006XN	6 W	NW	105 x 105	121 x 121 x 20	600
LLMP01S006XW	6 W	WW	105 x 105	121 x 121 x 20	600
LLMP01R006XC	6 W	CW	Φ 105	Φ 121 x 20	600
LLMP01R006XN	6 W	NW	Φ 105	Φ 121 x 20	600
LLMP01R006XW	6 W	WW	Φ 105	Φ 121 x 20	600
LLMP01S012XC	12 W	CW	155 x 155	171 x 171 x 20	755
LLMP01S012XN	12 W	NW	155 x 155	171 x 171 x 20	755
LLMP01S012XW	12 W	WW	155 x 155	171 x 171 x 20	755
LLMP01R012XC	12 W	CW	Φ 155	Φ 171 x 20	755
LLMP01R012XN	12 W	NW	Φ 155	Φ 171 x 20	755
LLMP01R012XW	12 W	WW	Φ 155	Φ 171 x 20	755
LLMP01S015XC	15 W	CW	155 x 155	171 x 171 x 20	940
LLMP01S015XN	15 W	NW	155 x 155	171 x 171 x 20	940
LLMP01S015XW	15 W	WW	155 x 155	171 x 171 x 20	940
LLMP01R015XC	15 W	CW	Φ 155	Φ 171 x 20	940
LLMP01R015XN	15 W	NW	Φ 155	Φ 171 x 20	940
LLMP01R015XW	15 W	WW	Φ 155	Φ 171 x 20	940
LLMP01S018XC	18 W	CW	175 x 175	190 x 190 x 20	1015
LLMP01S018XN	18 W	NW	175 x 175	190 x 190 x 20	1015
LLMP01S018XW	18 W	WW	175 x 175	190 x 190 x 20	1015
LLMP01R018XC	18 W	CW	Φ 175	Φ 190 x 20	1015
LLMP01R018XN	18 W	NW	Φ 175	Φ 190 x 20	1015
LLMP01R018XW	18 W	WW	Φ 175	Φ 190 x 20	1015
LLMP01S022XC	22 W	CW	206 x 206	225 x 225 x 20	1135
LLMP01S022XN	22 W	NW	206 x 206	225 x 225 x 20	1135
LLMP01S022XW	22 W	WW	206 x 206	225 x 225 x 20	1135
LLMP01R022XC	22 W	CW	Φ 206	Φ 225 x 20	1135
LLMP01R022XN	22 W	NW	Φ 206	Φ 225 x 20	1135
LLMP01R022XW	22 W	WW	Φ 206	Φ 225 x 20	1135



Long life



CRI >75



Beam angle
>120°

Technical & Commercial Data:

Input voltage range: 100 V - 300 V AC

Luminous efficacy: >75 Lm/W

Power factor: >0.95

Housing material: Die cast aluminium

Lot size: 20 pcs for 3 W - 6 W

10 pcs for 12 W - 22 W



Long life



CRI >80



Beam angle
>120°

Technical & Commercial Data:

Input voltage range: 100 V - 300 V AC

Luminous efficacy: >90 Lm/W

Power factor: >0.95

Housing material: Thermally conductive polycarbonate

Lot size: 50 pcs for 5 W | 20 pcs for 8 W - 22 W

Strella HD

Product Code	Power (W)	CCT	CUTOUT (MM)	Dimension (MM)	MRP
LSTA4KVR05XC	5 W	CW	Φ 70	Φ 80 x 35	245
LSTA4KVR05XN	5 W	NW	Φ 70	Φ 80 x 35	245
LSTA4KVR05XW	5 W	VW	Φ 70	Φ 80 x 35	245
LSTA01S008XC	8 W	CW	105 x 105	116 x 116 x 35	435
LSTA01S008XN	8 W	NW	105 x 105	116 x 116 x 35	435
LSTA01S008XW	8 W	VW	105 x 105	116 x 116 x 35	435
LSTA01R008XC	8 W	CW	Φ 105	Φ 116 x 35	435
LSTA01R008XN	8 W	NW	Φ 105	Φ 116 x 35	435
LSTA01R008XW	8 W	VW	Φ 105	Φ 116 x 35	435
LSTA4KVR12XC	12 W	CW	Φ 155	Φ 162 x 35	535
LSTA4KVR12XN	12 W	NW	Φ 155	Φ 162 x 35	535
LSTA4KVR12XW	12 W	VW	Φ 155	Φ 162 x 35	535
LSTA01S015XC	15 W	CW	155 x 155	162 x 162 x 35	635
LSTA01S015XN	15 W	NW	155 x 155	162 x 162 x 35	635
LSTA01S015XW	15 W	VW	155 x 155	162 x 162 x 35	635
LSTA01R015XC	15 W	CW	Φ 155	Φ 162 x 35	635
LSTA01R015XN	15 W	NW	Φ 155	Φ 162 x 35	635
LSTA01R015XW	15 W	VW	Φ 155	Φ 162 x 35	635
LSTA01S022XC	22 W	CW	205 x 205	220 x 220 x 35	1045
LSTA01S022XN	22 W	NW	205 x 205	220 x 220 x 35	1045
LSTA01S022XW	22 W	VW	205 x 205	220 x 220 x 35	1045
LSTA01R022XC	22 W	CW	Φ 205	Φ 220 x 35	1045
LSTA01R022XN	22 W	NW	Φ 205	Φ 220 x 35	1045
LSTA01R022XW	22 W	VW	Φ 205	Φ 220 x 35	1045



Strella Accessories

Product Code	Power (W)	CUTOUT (MM)	MRP
LSTA01SMS008	8 W	105 x 105	180
LSTA01SMR008	8 W	Φ 105	180
LSTA01SMS015	15 W	155 x 155	190
LSTA01SMR015	15 W	Φ 155	190
LSTA01SMS022	22 W	205 x 205	255
LSTA01SMR022	22 W	Φ 205	255



Long life



CRI >80



Beam angle
>120°

Technical & Commercial Data:

Input voltage range: 100 V - 300 V AC

Luminous efficacy: >70 Lm/W

Power factor: >0.95

Housing material: Sheet metal

Lot size: 5 pcs

Turnoe

Product Code	Power (W)	CCT	Dimension (MM)	MRP
LZET03R015XC	15 W	CW	Φ 300 x 85	1400



Glory

Product Code	Power (W)	CCT	CUTOUT (MM)	Dimension (MM)	MRP
LGOR01S003XC	3 W	CW	Φ 73	92 x 92 x 54	295
LGOR01S003XN	3 W	NW	Φ 73	92 x 92 x 54	295
LGOR01S003XW	3 W	WW	Φ 73	92 x 92 x 54	295
LGOR01R003XC	3 W	CW	Φ 73	Φ 92 x 54	295
LGOR01R003XN	3 W	NW	Φ 73	Φ 92 x 54	295
LGOR01R003XW	3 W	WW	Φ 73	Φ 92 x 54	295
LGOR02S006XC	6 W	CW	Φ 84	113 x 113 x 65	310
LGOR02S006XN	6 W	NW	Φ 84	113 x 113 x 65	310
LGOR02R006XC	6 W	CW	Φ 84	Φ 113 x 65	310
LGOR02R006XN	6 W	NW	Φ 84	Φ 113 x 65	310
LGOR02R006XW	6 W	WW	Φ 84	Φ 113 x 65	310
LGOR02R006XR	6 W	RED	Φ 84	Φ 113 x 65	310
LGOR02R006XG	6 W	GREEN	Φ 84	Φ 113 x 65	310
LGOR02R006XB	6 W	BLUE	Φ 84	Φ 113 x 65	310
LGOR02R006XP	6 W	PINK	Φ 84	Φ 113 x 65	310
LGOR02R006XV	6 W	VIOLET / PURPLE	Φ 84	Φ 113 x 65	310
LGOR01S010XC	10 W	CW	Φ 104	125 x 125 x 70	595
LGOR01S010XN	10 W	NW	Φ 104	125 x 125 x 70	595
LGOR01S010XW	10 W	WW	Φ 104	125 x 125 x 70	595
LGOR01R010XC	10 W	CW	Φ 104	Φ 125 x 70	595
LGOR01R010XW	10 W	WW	Φ 104	Φ 125 x 70	595



Long life



CRI >80



Beam angle
>120°

Technical & Commercial Data:

Input voltage range: 100 V - 300 V AC

Luminous efficacy: >70 Lm/W for 3 W,

>75 Lm/W for 6 W, >85 Lm/W for 10 W

Power factor: >0.9

Housing material: Thermally conductive polycarbonate

Lot size: 20 pcs

Suitable for junction box fitment



Pearl / Pearl Plus

Product Code	Power (W)	CCT	CUTOUT (MM)	Dimension (MM)	MRP
LPAL02R003XC	3 W	CW	Φ 45	Φ 80 x 45	195
LPAL02R003XN	3 W	NW	Φ 45	Φ 80 x 45	195
LPAL02R003XW	3 W	WW	Φ 45	Φ 80 x 45	195
LPAL02R003XR	3 W	RED	Φ 45	Φ 80 x 45	195
LPAL02R003XG	3 W	GREEN	Φ 45	Φ 80 x 45	195
LPAL02R003XB	3 W	BLUE	Φ 45	Φ 80 x 45	195
LPAL02R003XP	3 W	PINK	Φ 45	Φ 80 x 45	195
LPAL02R003XV	3 W	VIOLET / PURPLE	Φ 45	Φ 80 x 45	195
LPPS02R006XC	6 W	CW	Φ 45	Φ 80 x 65	310
LPPS02R006XN	6 W	NW	Φ 45	Φ 80 x 65	310
LPPS02R006XW	6 W	WW	Φ 45	Φ 80 x 65	310
LPPS02R006XR	6 W	RED	Φ 45	Φ 80 x 65	310
LPPS02R006XG	6 W	GREEN	Φ 45	Φ 80 x 65	310
LPPS02R006XB	6 W	BLUE	Φ 45	Φ 80 x 65	310
LPPS02R006XP	6 W	PINK	Φ 45	Φ 80 x 65	310
LPPS02R006XV	6 W	VIOLET / PURPLE	Φ 45	Φ 80 x 65	310
LPPS01R015XC	15 W	CW	Φ 45	Φ 140 x 65	650
LPPS01R015XN	15 W	NW	Φ 45	Φ 140 x 65	650
LPPS01R015XW	15 W	WW	Φ 45	Φ 140 x 65	650
LPPS01R015XR	15 W	RED	Φ 45	Φ 140 x 65	650
LPPS01R015XG	15 W	GREEN	Φ 45	Φ 140 x 65	650
LPPS01R015XB	15 W	BLUE	Φ 45	Φ 140 x 65	650
LPPS01R015XP	15 W	PINK	Φ 45	Φ 140 x 65	650
LPPS01R015XV	15 W	VIOLET / PURPLE	Φ 45	Φ 140 x 65	650



Long life



CRI >80



Beam angle
>120°

Technical & Commercial Data:

Input voltage range: 100 V - 300 V AC

Luminous efficacy: >70 Lm/W for 3 W,

>80 Lm/W for 6 W, >90 Lm/W for 15 W

Power factor: >0.9

Housing material: Thermally conductive polycarbonate

Lot size: 50 pcs for 3 W, 20 pcs for 6 W & 15 W

Suitable for junction box fitment



Long life



CRI >80



Beam angle
>120°

Technical & Commercial Data:

Input voltage range: 100 V - 300 V AC

Luminous efficacy: >75 Lm/W

Power factor: >0.95

Housing material: Thermally conductive polycarbonate with aluminium heat sink

Lot size: 20 pcs

Suitable for junction box fitment

Striker

Product Code	Power (W)	CCT	CUTOUT (MM)	Dimension (MM)	MRP
LSTK01R006XC	6 W	CW	Φ 83	Φ 108 x 62	235
LSTK01R006XN	6 W	NW	Φ 83	Φ 108 x 62	235
LSTK01R006XW	6 W	VW	Φ 83	Φ 108 x 62	235
LSTK01R006XR	6 W	RED	Φ 83	Φ 108 x 62	235
LSTK01R006XG	6 W	GREEN	Φ 83	Φ 108 x 62	235
LSTK01R006XB	6 W	BLUE	Φ 83	Φ 108 x 62	235
LSTK01R006XP	6 W	PINK	Φ 83	Φ 108 x 62	235
LSTK01R006XV	6 W	VIOLET / PURPLE	Φ 83	Φ 108 x 62	235







Spot Lights

Highlight the little details when you bring home Jaquar's energy-efficient LED spot lights. The different colour temperatures lend your home décor a vibrant and new look every time.

APPLICATIONS



Living rooms



Kitchens



Decorations



Shelves



Focus



Cabinets



Long life



CRI >80



Beam angle
>40°

Technical & Commercial Data:

Input voltage range: 100 V - 300 V AC

Luminous efficacy: >90 Lm/W

Power factor: >0.95

Housing material: Die cast aluminium

Lot size: 10 pcs

Gem Plus

Product Code	Power (W)	CCT	CUTOUT (MM)	Dimension (MM)	MRP
LGMP01R005XC	5 W	CW	Φ 70	Φ 85 x 55	595
LGMP01R005XN	5 W	NW	Φ 70	Φ 85 x 55	595
LGMP01R005XW	5 W	WW	Φ 70	Φ 85 x 55	595
LGMP01R010XC	10 W	CW	Φ 70	Φ 85 x 70	920
LGMP01R010XN	10 W	NW	Φ 70	Φ 85 x 70	920
LGMP01R010XW	10 W	WW	Φ 70	Φ 85 x 70	920
LGMP01R015XC	15 W	CW	Φ 90	Φ 110 x 85	1485
LGMP01R015XN	15 W	NW	Φ 90	Φ 110 x 85	1485
LGMP01R015XW	15 W	WW	Φ 90	Φ 110 x 85	1485
LGMP01R020XC	20 W	CW	Φ 110	Φ 140 x 95	1845
LGMP01R020XN	20 W	NW	Φ 110	Φ 140 x 95	1845
LGMP01R020XW	20 W	WW	Φ 110	Φ 140 x 95	1845



Long life



CRI >70



Beam angle >30°

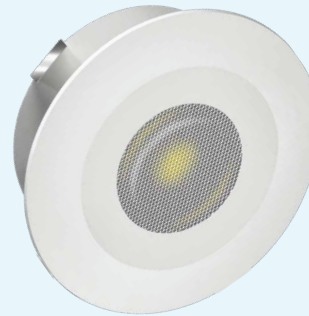
Technical & Commercial Data:

Input voltage range: 100 V - 300 V AC

Luminous efficacy: >50 Lm/W

Housing material: Thermally conductive polycarbonate

Lot size: 50 pcs



Jasper Neo

Product Code	Power (W)	CCT	CUTOUT (MM)	Dimension (MM)	MRP
LJPN01R002XC	2 W	CW	Φ 32	Φ 42 x 16	170
LJPN01R002XW	2 W	WW	Φ 32	Φ 42 x 16	170
LJPN01R002XR	2 W	RED	Φ 32	Φ 42 x 16	170
LJPN01R002XG	2 W	GREEN	Φ 32	Φ 42 x 16	170
LJPN01R002XB	2 W	BLUE	Φ 32	Φ 42 x 16	170



Jasper Plus

Product Code	Power (W)	CCT	CUTOUT (MM)	Dimension (MM)	MRP
LJPP01S002XC	2 W	CW	Φ 28	39 x 39 x 28	270
LJPP01S002XW	2 W	WW	Φ 28	39 x 39 x 28	270
LJPP02R002XC	2 W	CW	Φ 28	Φ 39 x 28	270
LJPP02R002XW	2 W	WW	Φ 28	Φ 39 x 28	270
LJPP02R002XR	2 W	RED	Φ 28	Φ 39 x 28	270
LJPP02R002XG	2 W	GREEN	Φ 28	Φ 39 x 28	270
LJPP02R002XB	2 W	BLUE	Φ 28	Φ 39 x 28	270



Long life



CRI >80



Beam angle >30°

Technical & Commercial Data:

Input voltage range: 100 V - 300 V AC

Luminous efficacy: >50 Lm/W

CRI: >80

Housing material: Aluminium

Lot size: 50 pcs





Battens

Brighten up your space with Jaquar's range of environment-friendly LED battens. Available in different lumen intensity and colour temperatures, our battens are perfect for your home décor.

APPLICATIONS



Bedrooms



Living rooms



Kitchens



Study rooms



Terraces



Balconies



Pooja rooms



Kubik Ultra

Product Code	Power (W)	CCT	Dimension (L X W X H)	MRP
LGLZU1X025XC	25 W	CW	1135 x 31 x 40	590
LKBU4KVS35XC	35 W	CW	1135 x 22 x 37	740



Long life



CRI >80



Beam angle
>120° for 35 W
>180° for 25 W



117 Lm/W for 35 W
130 Lm/W for 25 W

Technical & Commercial Data:

Input voltage range: 100 V - 300 V AC

Power factor: >0.95

Housing material: Extruded aluminium

Lot size: 20 pcs



Kubik Plus

Product Code	Power (W)	CCT	Dimension (MM)	MRP
LKBP01S006XC	6 W	CW	300 x 22 x 37	255
LKBP01S006XN	6 W	NW	300 x 22 x 37	255
LKBP01S006XW	6 W	WW	300 x 22 x 37	255
LKBP4KV010XC	10 W	CW	575 x 22 x 37	290
LKBP4KV010XN	10 W	NW	575 x 22 x 37	290
LKBP4KV010XW	10 W	WW	575 x 22 x 37	290
LKBP01S018XC	18 W	CW	1135 x 22 x 37	315
LKBP01S018XW	18 W	WW	1135 x 22 x 37	315
LKBP4KV020XC	20 W	CW	1135 x 22 x 37	330
LKBP4KV020XN	20 W	NW	1135 x 22 x 37	330
LKBP4KV020XW	20 W	WW	1135 x 22 x 37	330
LKBP01S022XC	22 W	CW	1135 x 31 x 40	455
LKBP01S022XN	22 W	NW	1135 x 31 x 40	455
LKBP01S022XW	22 W	WW	1135 x 31 x 40	455



Long life



CRI >80



Beam angle >120°



110 Lm/W for 22 W
100 Lm/W for 6 W - 20 W

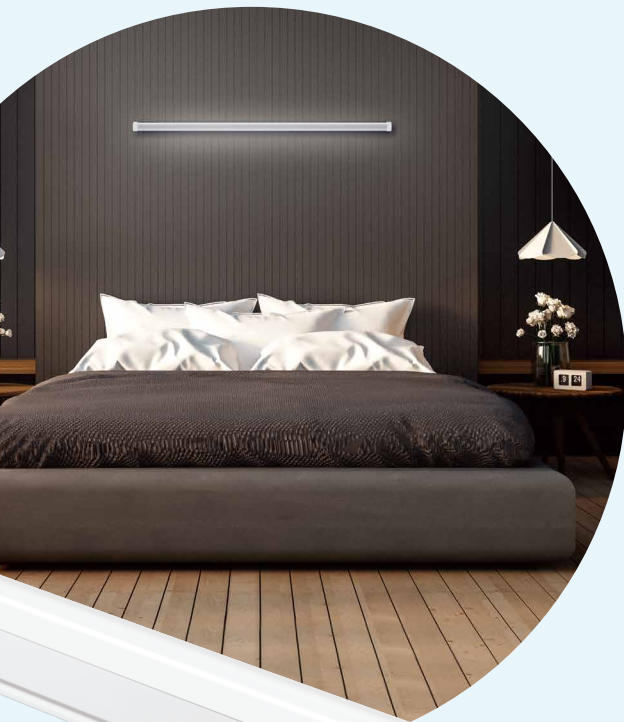
Technical & Commercial Data:

Input voltage range: 100 V - 300 V AC

Power factor: >0.95

Housing material: Thermally conductive polycarbonate

Lot size: 20 pcs



Kubik

Product Code	Power (W)	CCT	Dimension (MM)	MRP
LKBK02S020XC	20 W	CW	1145 x 21 x 33	330
LKBK02S020XN	20 W	NW	1145 x 21 x 33	330
LKBK02S020XW	20 W	WW	1145 x 21 x 33	330



Long life



CRI >80



Beam angle
>120°

Technical & Commercial Data:

Input voltage range: 100 V - 300 V AC

Luminous efficacy: 100 Lm/W

Power factor: >0.95

Housing material: Thermally conductive polycarbonate

Lot size: 20 pcs







Lamps

Welcome home holistic lighting solutions from Jaquar. Want to light up a small space or illuminate an entire room? Here is our range of LED lamps from low wattage night bulbs to high wattage LED lamps for you. Enjoy the extra brightness of happiness that fits every budget and requirement.

APPLICATIONS



Bedrooms



Living rooms



Kitchens



Study rooms



Terraces



Balconies



Pooja rooms



Kriza

Product Code	Power (W)	CCT (K)	Dimension (LXWXH)	MRP
LKRZ009B22CW	9 W	6500 K	Φ 70 x 146	550



Long life



CRI > 80



Beam angle
> 120°

Technical & Commercial Data:

Input voltage range: 100 - 300 V AC

Luminous efficacy: > 80 Lm/W @ Normal Supply

Power factor: > 0.95

Charging time: Minimum 6 Hrs.

Housing materials: Thermally conductive polycarbonate

Lot size: 20 pcs

KRIZA EMERGENCY BULB



BATTERY BACKUP



Long life



CRI >80



Wide
Beam angle
>180°

Technical & Commercial Data:

Input voltage range: 100 V - 300 V AC

Luminous efficacy: 100 Lm/W

Power factor: >0.95

Housing material: Die cast aluminium

Lot size: 10 pcs

Illuminator / Prima Plus

Product Code	Base Cap	Power (W)	CCT	Dimension (MM)	MRP
LILM030B22CW	B22	30 W	CW	Φ 100 x 180	585
LILM040B22CW	B22	40 W	CW	Φ 115 x 198	885
LILM050B22CW	B22	50 W	CW	Φ 125 x 220	1050
LPRP030B22CW	B22	30 W	CW	Φ 100 x 185	585
LPRP040B22CW	B22	40 W	CW	Φ 120 x 232	885
LPRP050B22CW	B22	50 W	CW	Φ 142 x 262	1050



Long life



CRI >80



Wide
beam angle
>240°

Technical & Commercial Data:

Full glove diffuser for wide distribution of light

Input voltage range: 100 V - 300 V AC

Luminous efficacy: 105 Lm/W

Power factor: >0.95

Housing material: Overmoulded PC

Lot size: 50 pcs for 3 W to 14 W, 20 pcs for 20 W

Prima HD

Product Code	Base Cap	Power (W)	CCT	Dimension (MM)	MRP
LPRM4KV03B2C	B22	3 W	CW	Φ 50 x 92	115
LPRM4KV03B2W	B22	3 W	WW	Φ 50 x 92	115
LPRM4KV03E2C	E27	3 W	CW	Φ 50 x 92	115
LPRM4KV03E2W	E27	3 W	WW	Φ 50 x 92	115
LPRM4KV05B2C	B22	5 W	CW	Φ 60 x 112	155
LPRM4KV05B2W	B22	5 W	WW	Φ 60 x 112	155
LPRM4KV05E2C	E27	5 W	CW	Φ 60 x 112	155
LPRM4KV05E2W	E27	5 W	WW	Φ 60 x 112	155
LPRM4KV07B2C	B22	7 W	CW	Φ 60 x 112	155
LPRM4KV07B2W	B22	7 W	WW	Φ 60 x 112	155
LPRM4KV07E2C	E27	7 W	CW	Φ 60 x 112	155
LPRM4KV07E2W	E27	7 W	WW	Φ 60 x 112	155
LPRM4KV09B2C	B22	9 W	CW	Φ 60 x 112	155
LPRM4KV09B2W	B22	9 W	WW	Φ 60 x 112	155
LPRM4KV09E2C	E27	9 W	CW	Φ 60 x 112	155
LPRM4KV09E2W	E27	9 W	WW	Φ 60 x 112	155
LPRM012B22CW	B22	12 W	CW	Φ 65 x 118	240
LPRM012B22 WW	B22	12 W	WW	Φ 65 x 118	240
LPRM012E27CW	E27	12 W	CW	Φ 65 x 118	240
LPRM012E27WW	E27	12 W	WW	Φ 65 x 118	240
LPRM4KV14B2C	B22	14 W	CW	Φ 65 x 126	270
LPRM4KV14B2W	B22	14 W	WW	Φ 65 x 126	270
LPRM4KV14E2C	E27	14 W	CW	Φ 65 x 126	270
LPRM4KV14E2W	E27	14 W	WW	Φ 65 x 126	270
LPRM4KV20B2C	B22	20 W	CW	Φ 80 x 152	360
LPRM4KV20B2W	B22	20 W	WW	Φ 80 x 152	360
LPRM4KV20E2C	E27	20 W	CW	Φ 80 x 152	360
LPRM4KV20E2W	E27	20 W	WW	Φ 80 x 152	360



Long life



CRI >80



Beam angle
>140°

Technical & Commercial Data:

Input voltage range: 100 V - 300 V AC

Luminous efficacy: 105 Lm/W

Power factor: >0.95

Housing material: Overmoulded PC

Lot size: 50 pcs

Spark HD

Product Code	Base Cap	Power (W)	CCT	Dimension (MM)	MRP
LSAK4KV05B2C	B22	5 W	CW	Φ 57 x 100	130
LSAK4KV07B2C	B22	7 W	CW	Φ 57 x 100	130
LSAK4KV09B2C	B22	9 W	CW	Φ 57 x 102	130



Long life



CRI >80



Beam angle
>180°

Technical & Commercial Data:

Input voltage range: 100 V - 300 V AC

Luminous efficacy: >40 Lm/W

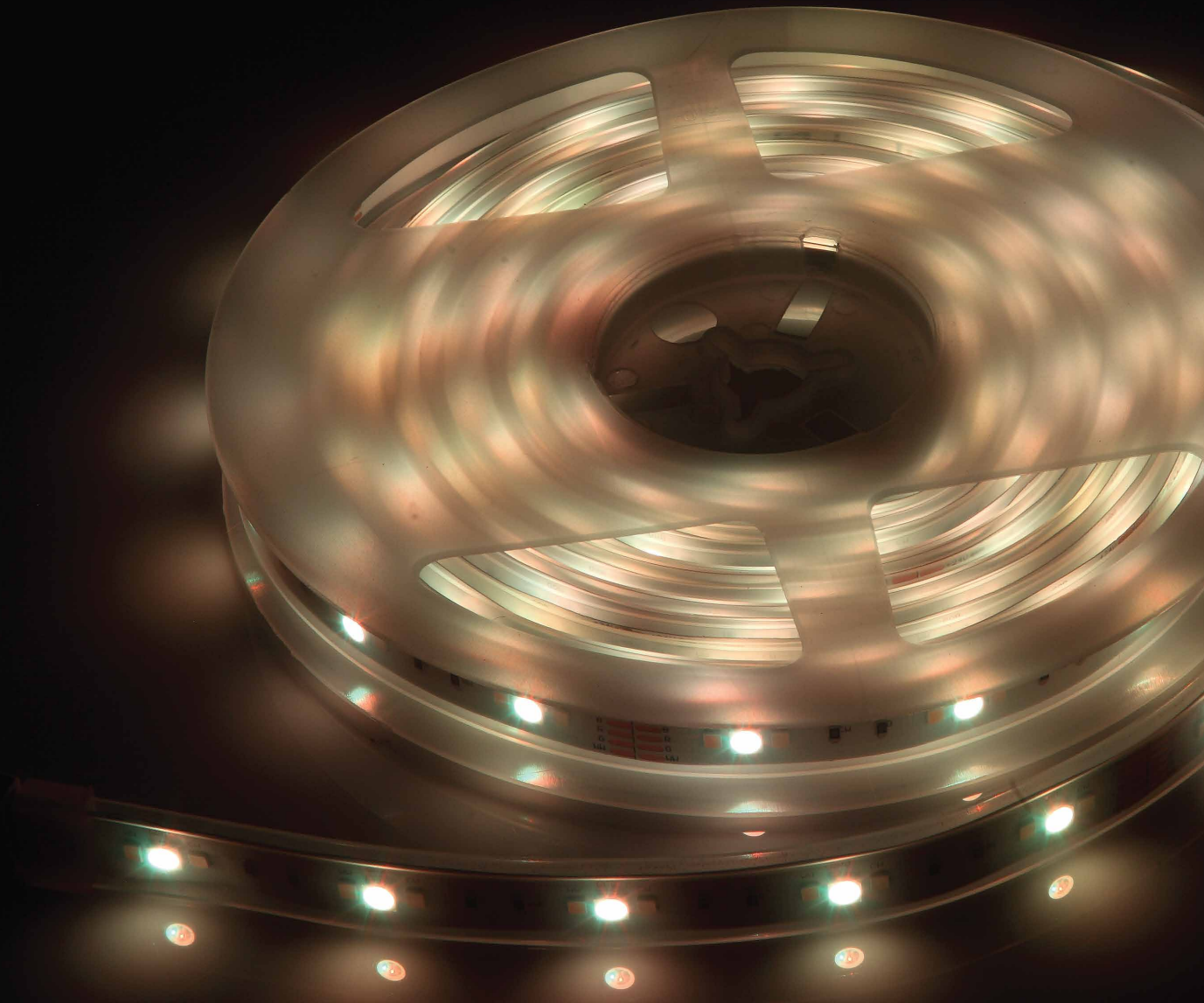
Housing material: Polycarbonate

Lot size: 60 pcs

Night Lamps (0.5 W)

Product Code	Base Cap	Power (W)	CCT	Dimension (MM)	MRP
LPRM01R001XC	B22	0.5 W	CW	Φ 45 x 70	55
LPRM01R001XY	B22	0.5 W	YELLOW	Φ 45 x 70	55
LPRM01R001XR	B22	0.5 W	RED	Φ 45 x 70	55
LPRM01R001XG	B22	0.5 W	GREEN	Φ 45 x 70	55
LPRM01R001XB	B22	0.5 W	BLUE	Φ 45 x 70	55
LPRM01R001XO	B22	0.5 W	ORANGE	Φ 45 x 70	55
LPRM01R001XP	B22	0.5 W	PINK	Φ 45 x 70	55







Strip Lights

Give your home a festive makeover or create awe-inspiring spaces within your home with our LED strip lights in blue, white, and other pleasing colours. Our strip lights come in 5-meter roll with specific cut points.

APPLICATIONS



Living rooms



Kitchens



Decorations



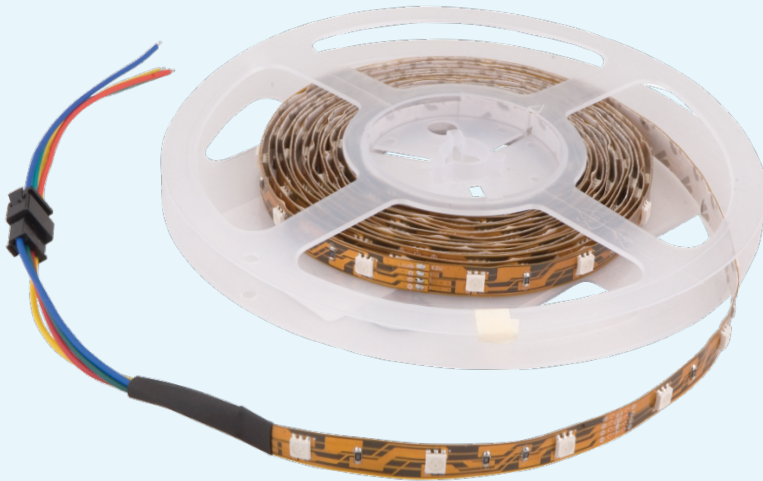
Shelves



Focus



Cabinets



Technical & Commercial Data:

Input voltage range: 12 V DC (with adapter)
 Luminous efficacy: >90 Lm/W
 Roll: 5 meter with cut points
 No. of LEDs: 60 LEDs / meter
 Lot size: 5 pcs

Janus

Product Code	Power (W)	CCT	Dimension (MM)	MRP
LJNS02S012XC	24 W	CW	8 x 2.25	850
LJNS02S012XN	24 W	NW	8 x 2.25	850
LJNS02S012XW	24 W	WW	8 x 2.25	850
LJNS02S012XR	24 W	Red	8 x 2.25	850
LJNS02S012XG	24 W	Green	8 x 2.25	850
LJNS02S012XB	24 W	Blue	8 x 2.25	850
LJNS01S012XC	24 W	CW	8 x 2.25	850
LJNS01S012XN	24 W	NW	8 x 2.25	850
LJNS01S012XW	24 W	WW	8 x 2.25	850



Strip Driver

Product Code	Voltage (V)	Current (A)	MRP
LSTD02A012X	12 DC	2A	555







Street Lights

Create a safe city with Jaquar's street lights. Made for high-performance, our range of street lights are engineered to withstand tough weather condition. Available in a range of 20-30 watts, these street lights emit a warm and subtle light.

APPLICATIONS



Parkings



Walkways



Long life



CRI >80



Beam angle
>120°

Technical & Commercial Data:

Input voltage range: 100 V - 300 V AC

Luminous efficacy: >100 Lm/W

THD: <10%

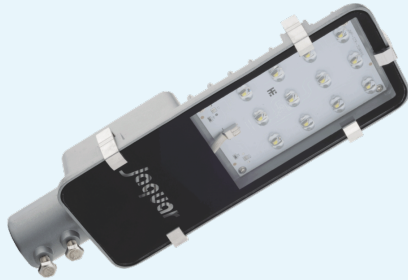
IP: 65

Housing material: Die cast aluminium

Lot size: 10 pcs

Hummer

Product Code	Power (W)	CCT	Pole Mounting Dimensions (MM)	Dimension (MM)	MRP
LHMR01SL020C	20 W	CW	Φ 40	320 x 75 x 60	1545
LHMR01SL030C	30 W	CW	Φ 40	320 x 75 x 60	2410



PCR

Product Code	Power (W)	CCT	Pole Mounting Dimensions (MM)	Dimension (MM)	MRP
LPCRSRT25WXC	25 W	CW	Φ 42	330 x 117 x 67	1600



Long life



CRI >70



Beam angle
>120°

Technical & Commercial Data:

Input voltage range: 100 V - 300 V AC

Luminous efficacy: >100 Lm/W

THD: <10%

IP: 66

Housing material: Die cast aluminium

Lot size: 10 pcs



Long life



CRI >80



Beam angle
>120°

Technical & Commercial Data:

Input voltage range: 100 V - 300 V AC

Luminous efficacy: >100 Lm/W

THD: <10%

IP: 65

Housing material: Die cast aluminium

Lot size: 10 pcs



Street Lights

Product Code	Power (W)	CCT	Pole Mounting Dimensions (MM)	Dimension (MM)	MRP
LSRT01F025C	25 W	CW	Φ 42	325 x 145 x 65	1600



Global Headquarters

Net Zero Energy Building spread over 48,000 sq. mtrs.

Conceived back in 1960, the Jaquar Group has been built on the platform of the highest quality standards, aesthetics, and the intent of providing world-class products. Today, the Jaquar Group caters to luxury, premium and value bathroom segments with Artize, Jaquar & Essco brands, respectively, for residential and commercial sectors across the globe. The group's lighting division, Jaquar Lighting too, has been setting new parameters of excellence while witnessing unprecedented success.

Artize

It pays a tribute to the fine traditions of exquisite craftsmanship and precision where design, technology and talent combine to deliver a masterpiece. Artize products are crafted for luxurious bath spaces. Perfect harmony is the very essence of Artize-together as coordinates or even as individual pieces. Artize's exquisite craftsmanship is so stunning that it can inspire the design principles of not just your bath spaces but of your entire living spaces.



A leading global super brand known for its excellence in innovation and technology. The highest build standards combine with the most beautifully designed aesthetics to provide world-class products for tough conditions. With a superb blend of ergonomic shapes, contemporary styles and meticulous finish, Jaquar continues to enthral millions of hearts across the world with its wide range of concepts and products.



For over five decades now, Essco, the bath fittings brand, has been supporting affordable and sustainable housing in India. Essco is a value for money bath brand from the Jaquar Group, which is the leader in Complete Bathing Solutions. Essco, a Pan India brand, added a whole new chapter in the bath fittings industry by ushering in the era of the organised bath market. Essco set out with an obsession for good quality products at affordable pricing, one that was unheard of in the corridors of bath fittings manufacturers then. With its 10 years of warranty and impeccable customer service, Essco is standing tall in the Indian bath fittings Industry since 1960 and touching more hearts every year.

Looking for
Jaquar Lighting Products?



BATH + LIGHT

**CALL
PURCHASE ASSISTANCE**

1800-120-332222

(Toll Free)

And we'll make it easy!

Speak to our Lighting Experts, who will suggest the right product that you should go in for and where to buy it from